

# **Switch Shutdown Service User Manual**

Copyright ©2004, All rights reserved.  
Document version 1.0.2

## **Introduction:**

In today's new era of technology, people are not only demanding efficiency, but also convenience, and that is why We has introduced several highly innovated products that focus on remote controlling electronic devices. To compliment these products, the technicians and the software developers have work to develop a new program called Switch Shutdown Service.

## **Functions:**

Switch Shutdown Service is a powerful software designed for Power Switch. Once the service is running, whenever the Power Switch is turned off, it will sent over a signal through a computer's communication port to notify the computer that the power will be cut off momentarily, so that the computer will have time to shut down itself gracefully. Beside the main program, Switch Shutdown Service, there is also a complimentary application, swconf, that allows the user to manually adjust the settings of the Switch Shutdown Service, i.e.: the communication port, the delay time, and etc. to their preferences.

## **Installation:**

*-for Mac:*

Choose the folder with MacOSX. Double click on "SwitchShutdown vxx.x.dmg.sit" (xx.x represents the version number) to extract the compressed files. In a few minutes, Mac will automatically mount a logical volume on desktop and a folder window should appear on the screen. It will contain two files, "SwitchShutdown.pkg" and "uninstall\_swsd.command" (See Figure 1). For installation purpose, please double click on "SwitchShutdown.pkg", and follows the installer instruction to complete the installation.

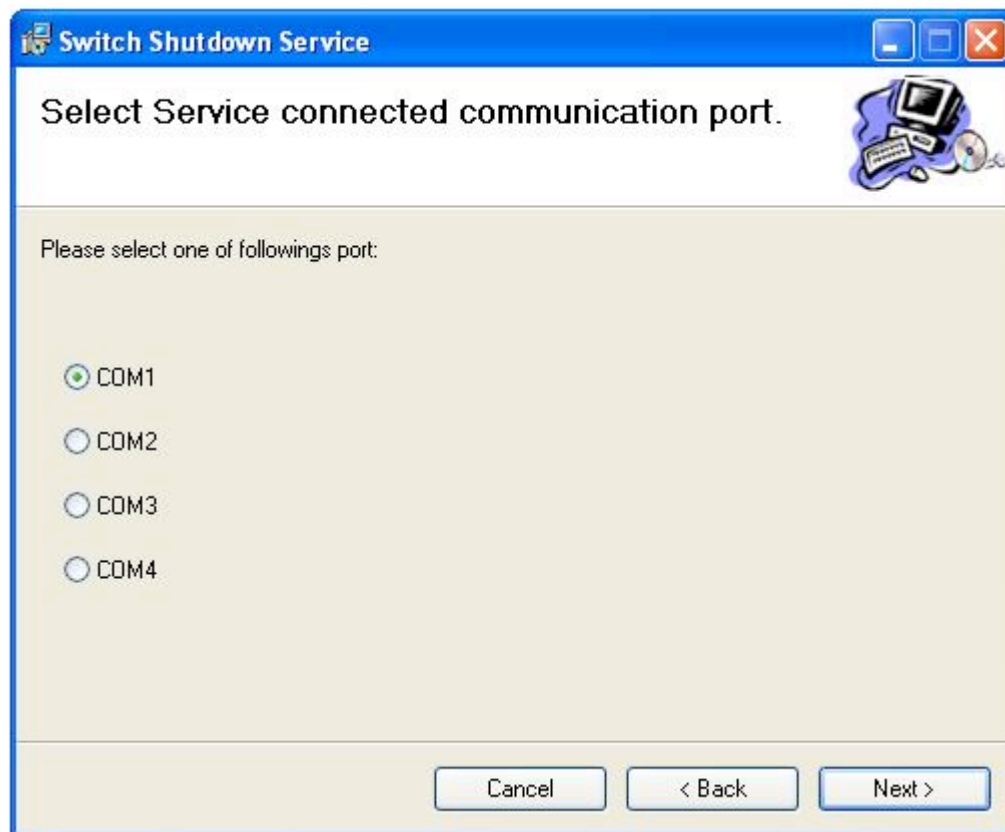


**Figure.1 - Click on the file on the right**

*-for Windows:*

Choose the folder that says Windows. Double click on "swsdvxxx.exe" (xxx represents the version number) to extract the compressed files. In a moment, a setup wizard will appear, and the user can simply follow the instructions to complete the installation.

Note. Setting up the communication port is one of the steps needed to complete the installation, and if for some reason, the port weren't set up correctly, the user can still correct it later on in the configuration stage.



**Figure.2 - One of the Steps in Windows Setup Wizard**

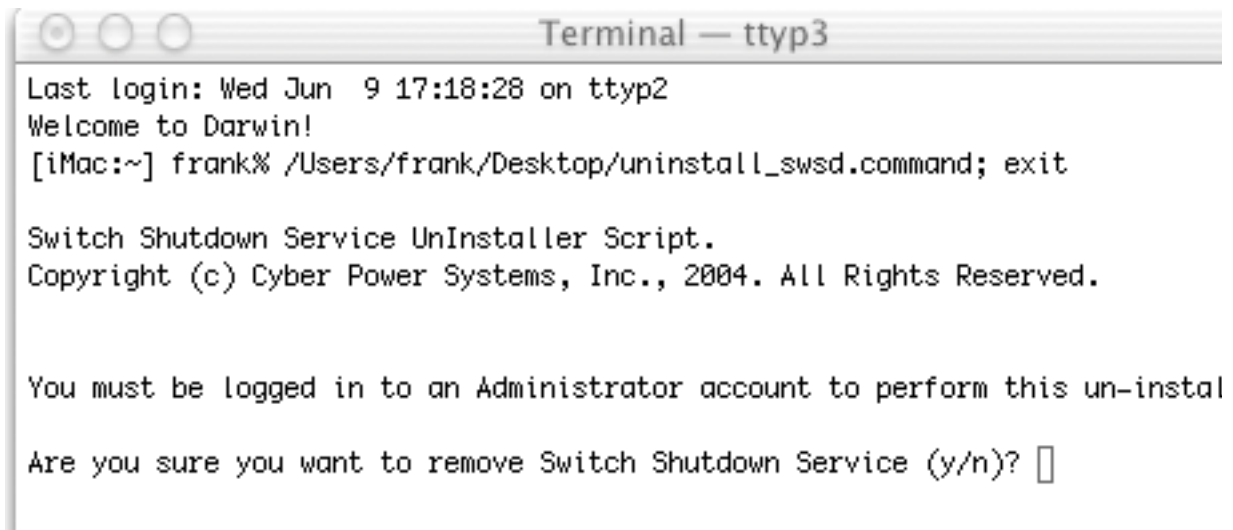
*-for Linux:*

Choose the folder that says Linux. Go to the directory where the files are placed on command prompt, and type "tar -zxvf swsdvx.x.tar.gz" (x.x is the version number) to extract the "swsdvx.x.tar.gz" file. After the command, a folder called "swsdvx.x" will be created and the compressed files will be put into that folder. Before installing Switch Shutdown Service, the user must be certain that he/she is an administrator (has 'root' privilege). If the user is not login by root, he/she can use "su" command (see 'man su' to get more information) and the administrator's password to change the user's identity to administrator. Go to the directory where the files were extracted, and type "./install" (without the double quotation mark), and Switch Shutdown Service will be installed automatically.

**Un-Installation:**

-for Mac:

Double click on "uninstall\_swsd.command" file from "SwitchShutdown v0.9" folder. Then follow the instructions given in the Terminal window (Figure 3).



```
Terminal — ttyp3
Last login: Wed Jun  9 17:18:28 on ttyp2
Welcome to Darwin!
[iMac:~] frank% /Users/frank/Desktop/uninstall_swsd.command; exit

Switch Shutdown Service UnInstaller Script.
Copyright (c) Cyber Power Systems, Inc., 2004. All Rights Reserved.

You must be logged in to an Administrator account to perform this un-install

Are you sure you want to remove Switch Shutdown Service (y/n)? 
```

**Figure.3 - Please Press "y" to Proceed the Un-Installation**

-for Windows:

Go to Control Panel and select "Add or Remove Programs" icon. Then pick Switch Shutdown Service and press remove.

-for Linux:

Go to the directory where the Switch Shutdown Service extracted files are stored, and type "./uninstall" (without the double quotation mark), and press "y" to remove the software.

### Default Settings:

Service State:	Running
Connected Communication Port:	The port that was set up during installation
System Shutdown:	Enabled
Delay Time:	15 seconds
Warning:	Enabled

### Configuration:

-for Mac:

The user need to operate the configuration from Terminal



**Figure.4 - to get to Terminal**

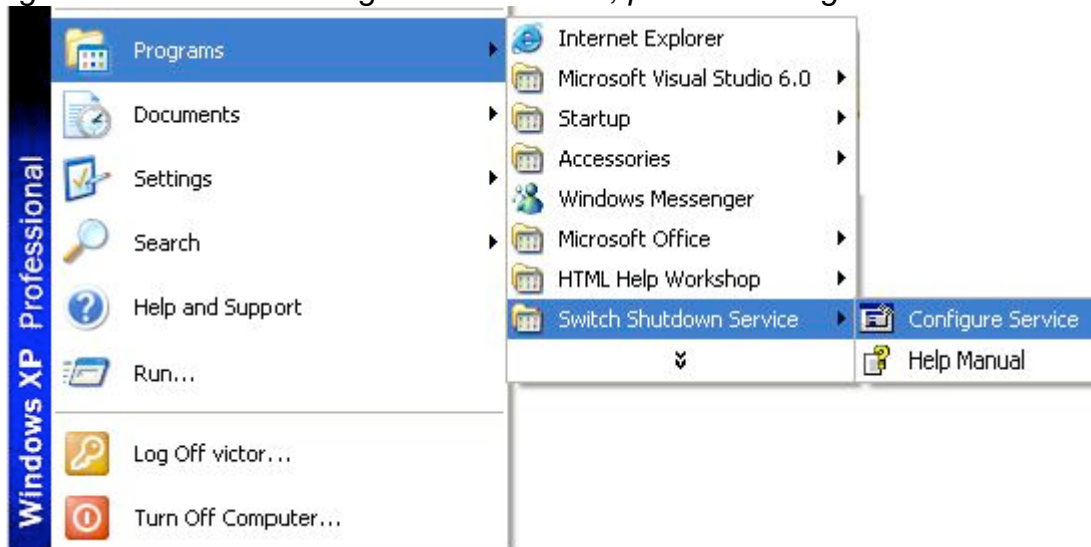
The command needed to gain access to the configuration interface (Figure 5).

```
[iMac:~] frank% swconf
Operation not permitted.
[iMac:~] frank% su
Password:
[iMac:/Users/frank] frank# swconf
```

**Figure.5 - to get to the configuration interface**

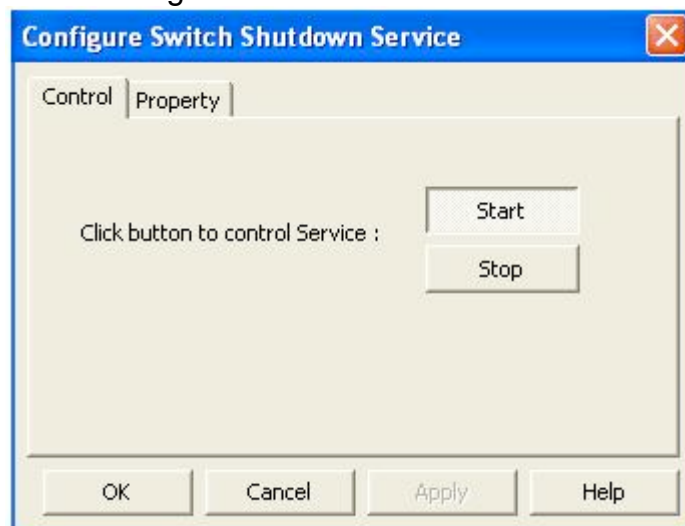
-for Windows:

To gain access to the configuration interface, please see Figure 6.



**Figure.6 - to Get to Configuration Interface**

The graph of the configuration interface for windows version is shown below.



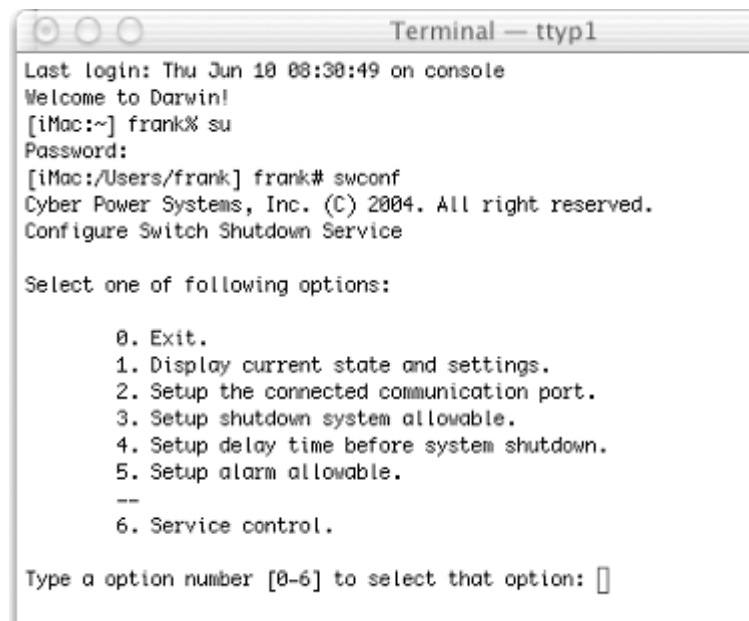
**Figure.7**

**Note** - for detail on how to configure the default settings, please refer to the help manual for window

-For Linux:

To make changes to the default settings, the user need to type in `"/usr/sbin/swconf"` (without the double quotation mark). If the line, "Operation not permitted", appears, it means that this account does not have enough authority to access `swconf`. Type in `"su"` and the administrator's password to change the user's identity to administrator. After that, type in `"/usr/sbin/swconf"` again. A table of options should appear followed by a question asking the user to pick an option.

The graph of the configuration interface for Mac and Linux version is shown below. (See Figure 8.)



```
Terminal — tty1
Last login: Thu Jun 18 08:38:49 on console
Welcome to Darwin!
[iMac:~] frank% su
Password:
[iMac:/Users/frank] frank# swconf
Cyber Power Systems, Inc. (C) 2004. All right reserved.
Configure Switch Shutdown Service

Select one of following options:

    0. Exit.
    1. Display current state and settings.
    2. Setup the connected communication port.
    3. Setup shutdown system allowable.
    4. Setup delay time before system shutdown.
    5. Setup alarm allowable.
    --
    6. Service control.

Type a option number [0-6] to select that option: []
```

**Figure.8**

### Options:

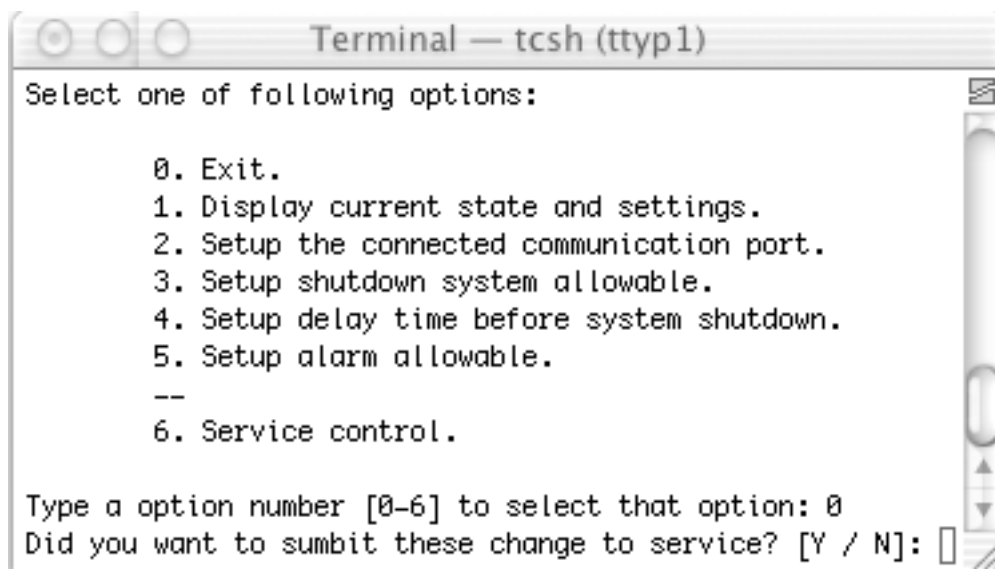
0. The user can exit the configuration.
1. The current settings will be displayed.
2. The available ports will be displayed and the user will be able to choose the one that they wish to connect.
3. The user can allow the computer to be shut down or to have the computer stays on once the computer receives a notification.
4. The user will have 5 choices of times, and they represent the time the computer will stay on before the system shuts down.
5. The user can choose to have the warning window enabled or disabled.
6. The user can start or stop Switch Shutdown Service.

**Note:** 1. During the configuration stage, the user can choose to permit or prohibit the system to be shut down by selecting option 3. However, it is highly

recommended that the user do not choose to prohibit system shut down because it would eliminate the main function of Switch Shutdown Service.

2. During the configuration stage, all the changes except starting or stopping the service will not take effect unless the user has agreed to submit the changes to the service. That is, only option 6 will take effect immediately, and the other options need to be confirmed.

After the user has selected to exit the configuration, and if the user has changed the settings, there will be a question asking the user to confirm the changes. (See Figure 9).



**Figure.9 - Please Press "y" to Confirm the Changes**

3. By default, there could possibly be a total of 4 warning windows displayed during the Shutdown process:

### **Warning Messages:**

*Message:* Service received a system shut down request from Switch. The power of the system will be lost. Please stop working and save any necessary files as soon as possible. This system will be shut down in xx seconds later.

*Explanation:* This warning is shown a few seconds after the computer has received a notification from the switch, and it will notify the user that the system will be shut down and show the amount of time the user has until shutdown. However, the time might seem to be less than the configured delay time, and it is because the computer needs to take a few seconds to make sure that the notification from Switch Shutdown Service is valid.

*Message:* The Switch Shutdown request no longer exists. System

Shutdown procedure has been cancelled.

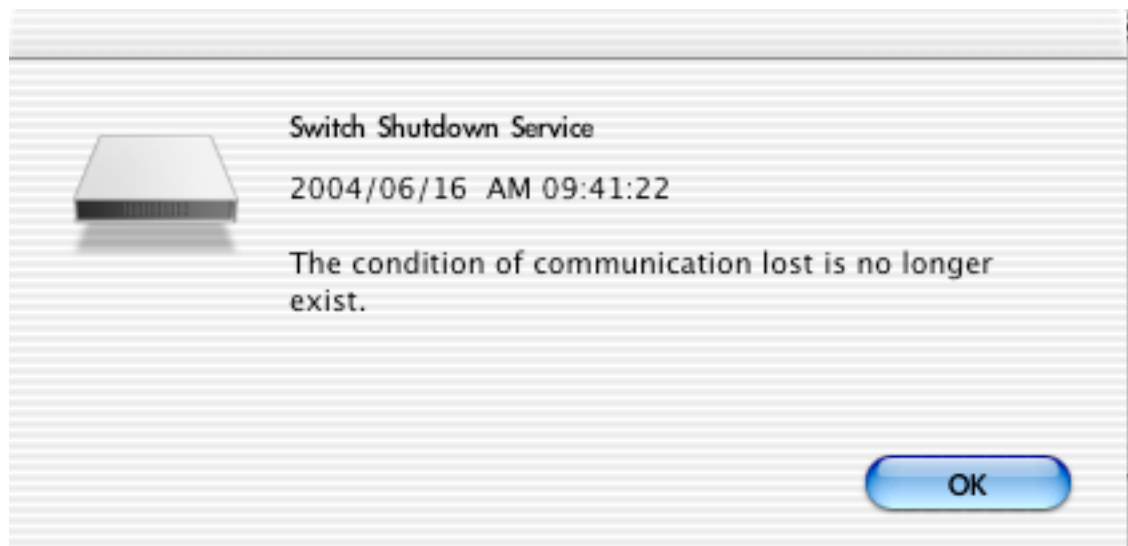
*Explanation:* This warning is shown when the user withdraws the request within the delay time. The system will not be shut down.

*Message:* The communication is lost. Please check the connected device. In this condition, Service can not receive signal from Switch Service.

*Explanation:* This warning is shown when the communication device is not attached to the computer, and the service will not function as the result.

*Message:* The communication is restored (see Figure 10).

*Explanation:* This warning is shown when the communication device is being attached to the computer, and the service will function properly as the result.



**Figure.10 - One of the Warning Windows**